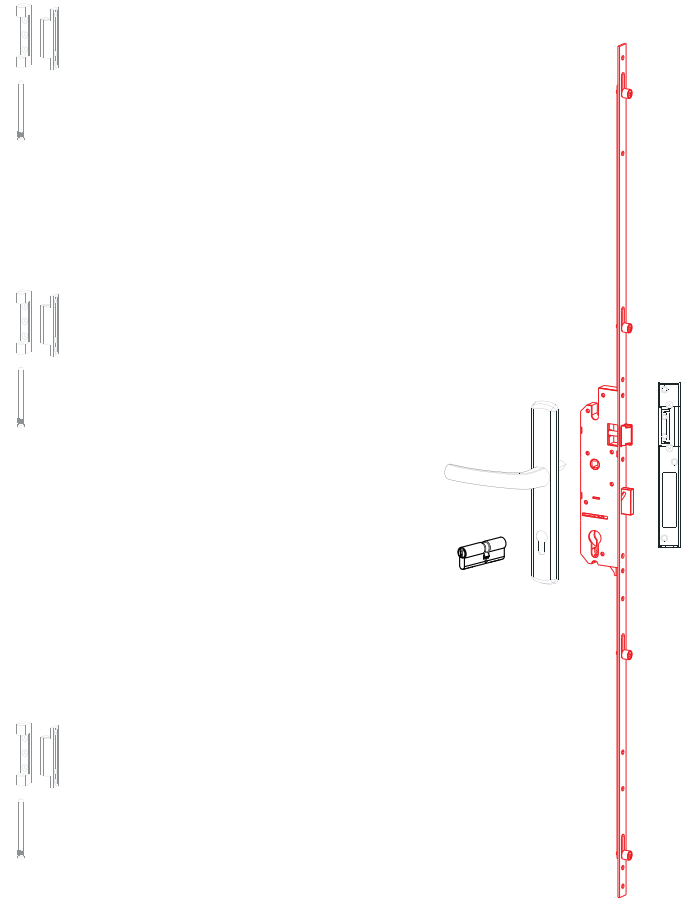


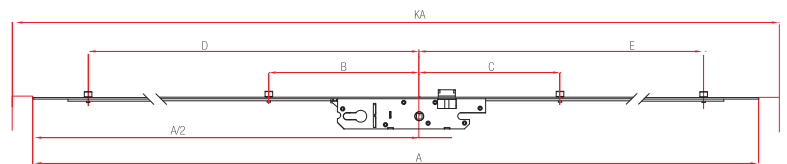
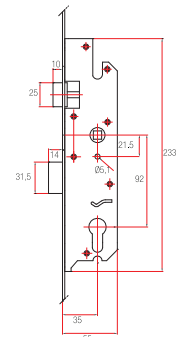
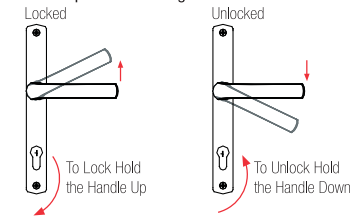
**Multipoint Locks
92/35mm**

Hardware Technical Details

KY - Sash Height	:	1600mm - 2400mm
GT - Body Type	:	Pls. Body-ironSheet Cover
Working Style	:	Handle Operated
Handle Centre	:	92mm
Axis	:	35mm



Handle Operated Working



w/Cylinder without/Deadbolt (B+/D-)

EP	GP	Description	Amount	Kg
170.160.192.135	170.160.192.235	1600/92/35 (B+/D-)	10	9.74
170.180.192.135	170.180.192.235	1800/92/35 (B+/D-)	10	10.80
170.200.192.135	170.200.192.235	2000/92/35 (B+/D-)	10	11.87

without/Cylinder-Deadbolt (B-/D-)

170.160.292.135	170.160.292.235	1600/92/35 (B-/D-)	10	9.74
170.180.292.135	170.180.292.235	1800/92/35 (B-/D-)	10	10.80
170.200.292.135	170.200.292.235	2000/92/35 (B-/D-)	10	11.87

with/Cylinder-Deadbolt (B+/D+)

170.160.392.135	170.160.392.235	1600/92/35 (B+/D+)	10	9.74
170.180.392.135	170.180.392.235	1800/92/35 (B+/D+)	10	10.80
170.200.392.135	170.200.392.235	2000/92/35 (B+/D+)	10	11.87

w/Cylinder without/Deadbolt (B+/D-)

KA	A	B	C	D	E	F		
1600-1800	1600	300	-	806	624	-	11	3
1800-2000	1800	300	308	806	824	-	12	4
2000-2400	2000	300	308	865	885	-	12	4

without/Cylinder-Deadbolt (B-/D-)

1600-1800	1600	300	-	806	624	-	11	3
1800-2000	1800	300	308	806	824	-	12	4
2000-2400	2000	300	308	865	885	-	12	4

with/Cylinder-Deadbolt (B+/D+)

1600-1800	1600	300	-	806	624	-	11	3
1800-2000	1800	300	308	806	824	-	12	4
2000-2400	2000	300	308	865	885	-	12	4

Note: Technical detail sizes are millimetric.
The sizes on the chart are given for opened position of the lock.